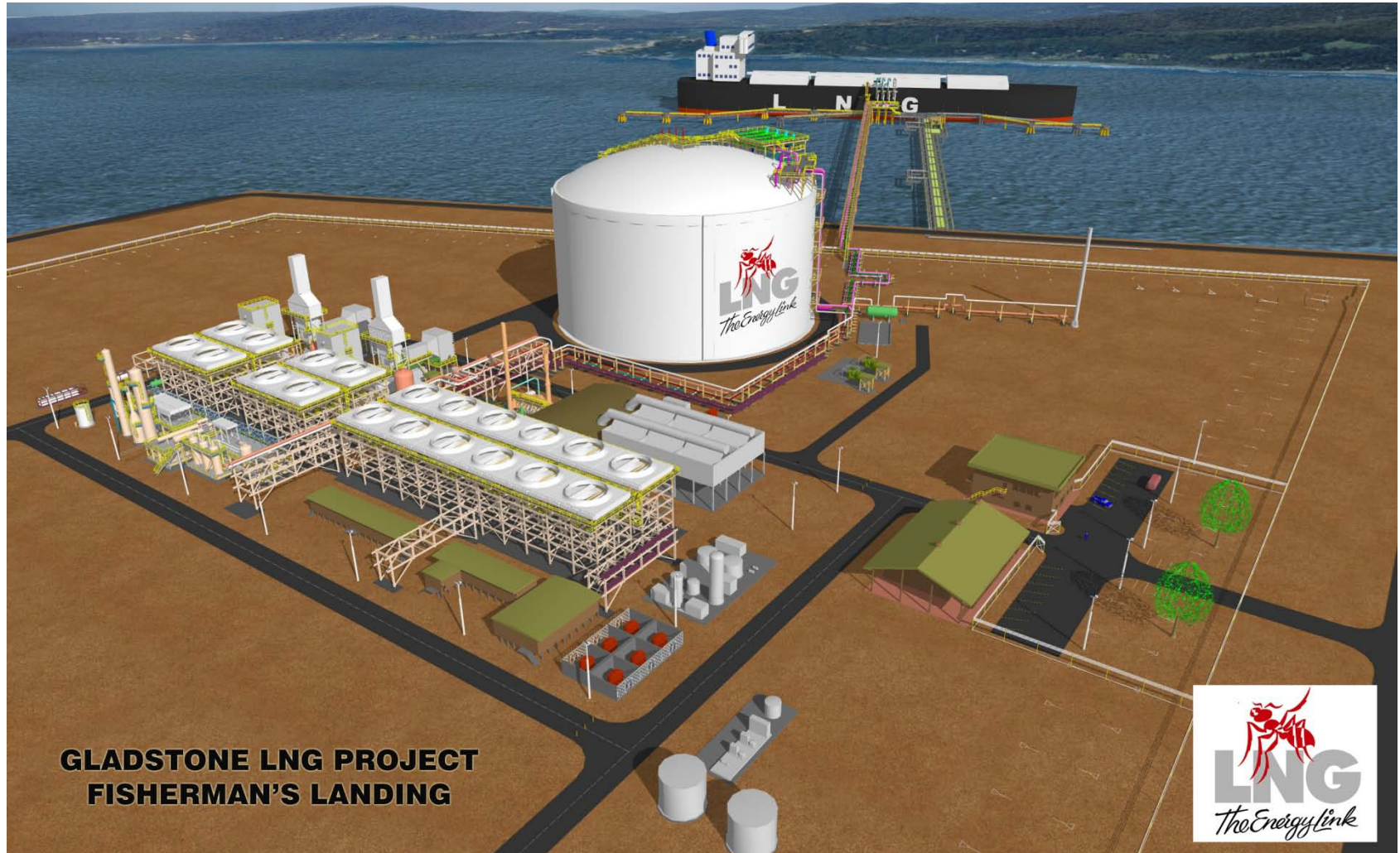


Gladstone LNG Project “Fisherman’s Landing”

A Shared Vision of HQCEC and LNG Limited



**GLADSTONE LNG PROJECT
FISHERMAN'S LANDING**



Shareholder Presentation: 7 June 2011

LNG Ltd - Corporate Overview

“Post HQCEC Transaction”

- ▶ **ASX Code:** LNG
- ▶ **Market Cap.:** A\$ 120 million (267 million shares at A\$ 0.45 / share)
- ▶ **Cash Reserves:** A\$ 30.3 million (as at Placement, no debt)
- ▶ **Top 5 Shareholders:** 45.12% ownership
- ▶ **Major Shareholders:** HQCEC (19.91%)
Copulos Group (10.09%)
Dart Energy Limited (5.37%)
P W Bridgwood (4.97%)
F M Brand (4.77%)
- ▶ **Key Messages:** 100% owner of the Gladstone LNG Project
Strategic Partner with global expectations for LNG
Endorsement of business model and technology
HQCEC committed to deliver Gladstone LNG Project
Tight Capital Structure
Directors' commitment to shareholder value
Strong and experienced board and executives

HQCEC Transaction

Remaining Condition Precedent

- ▶ HQCEC receiving approval from the Ministry of Commerce of the People's Republic of China

Key Points

- ▶ HQCEC to subscribe for 53,250,000 shares (~19.9%) in LNG Ltd
- ▶ Appointment of **Madam Wang Xinge** as an Executive Director and Co Chief Executive Officer of LNG Ltd, to work with the existing Managing Director/Chief Executive Officer, Maurice Brand. Madam Wang is currently a Senior Vice President of HQCEC, responsible for the international global operations of HQCEC
- ▶ Appointment of **Mr Zhang Gaowu** as a Non-Executive Director to the Board of LNG Ltd. Mr Zhang is the Deputy Director of Finance & Asset Management Division of HQCEC
- ▶ CNPC (or affiliate) as potential LNG off-taker and arranger of project funding
- ▶ Shared Vision:
 - ▶ Gladstone LNG Project “Fisherman’s Landing” to showcase the capabilities of LNG Ltd and HQCEC
 - ▶ Marketing of the OSMR[®] technology

Who is China Huanqiu Contracting & Engineering Corporation (HQCEC)?

- ▶ Wholly owned by CNPC, with over 9,500 employees
- ▶ Technology focussed engineering, procurement, construction, consulting, R&D, manufacturing and project management group
- ▶ HQCEC has delivered more than 2,000 projects over its 50 years of operation
- ▶ Executed and delivered Guangdong LNG receiving terminal; Jiangsu LNG receiving terminal near Shanghai; Dalian LNG receiving terminal; and likely EPC contractor for the Tangshan LNG receiving terminal near Beijing
- ▶ EPC contractor for the Ansai LNG plant (500,000 tpa) in China using own technology

Who is China National Petroleum Corporation (CNPC)?

- ▶ China's largest oil (54% share) and gas (82% share) producer and supplier
- ▶ Top 5 global oil and gas company, with over 1.6 million employees
- ▶ Ranked 10 in revenue amongst 2010 Fortune Global 500 companies
- ▶ Oil and gas assets and interest in 29 countries and presence in almost 70 countries
- ▶ Businesses covering petroleum exploration & production, natural gas & pipelines, refining & marketing, oilfield services, engineering construction, equipment manufacturing, R&D, capital management, finance and insurance services

Gladstone LNG Project “Fisherman’s Landing”

Project Description

- ▶ 3 mtpa LNG Plant to be located on Fisherman’s Landing, an existing reclaimed site on the mainland, Port of Gladstone. Project utilises existing Berth #5 and other port infrastructure. Key approvals and licences in place
- ▶ HQCEC actively supporting LNG Ltd’s gas supply plan
- ▶ HQCEC to provide proposal for the EPC Contract for the LNG Plant
- ▶ CNPC (or affiliate) to potentially be appointed LNG off-taker and arranger of project funding

Project Schedule Targets

- ▶ Finalise gas supply arrangements
- ▶ Re-commence construction
- ▶ 30 month construction schedule
- ▶ Capable of commencing LNG production



Key Targets for 2011

▶ Review Jemena's Pre-Feed Study

- ▶ Expected Outcome: ability to delivery 260 TJ/day of gas from Wallumbilla to Gladstone in second half 2014

▶ Commence Jemena FEED Study and negotiate Gas Transportation Agreement between LNG Ltd and Jemena

▶ Finalise Gas Supply Arrangements

- ▶ Establish gas hubs at both Callide and Wallumbilla
- ▶ Finalise gas supply arrangements, target groups being

Curtis Island Projects

- ▶ Ramp-up gas supply (short term)
- ▶ Spot gas supply due to excess gas production at field(s)

Established Gas Producers

- ▶ Short term / long term supply

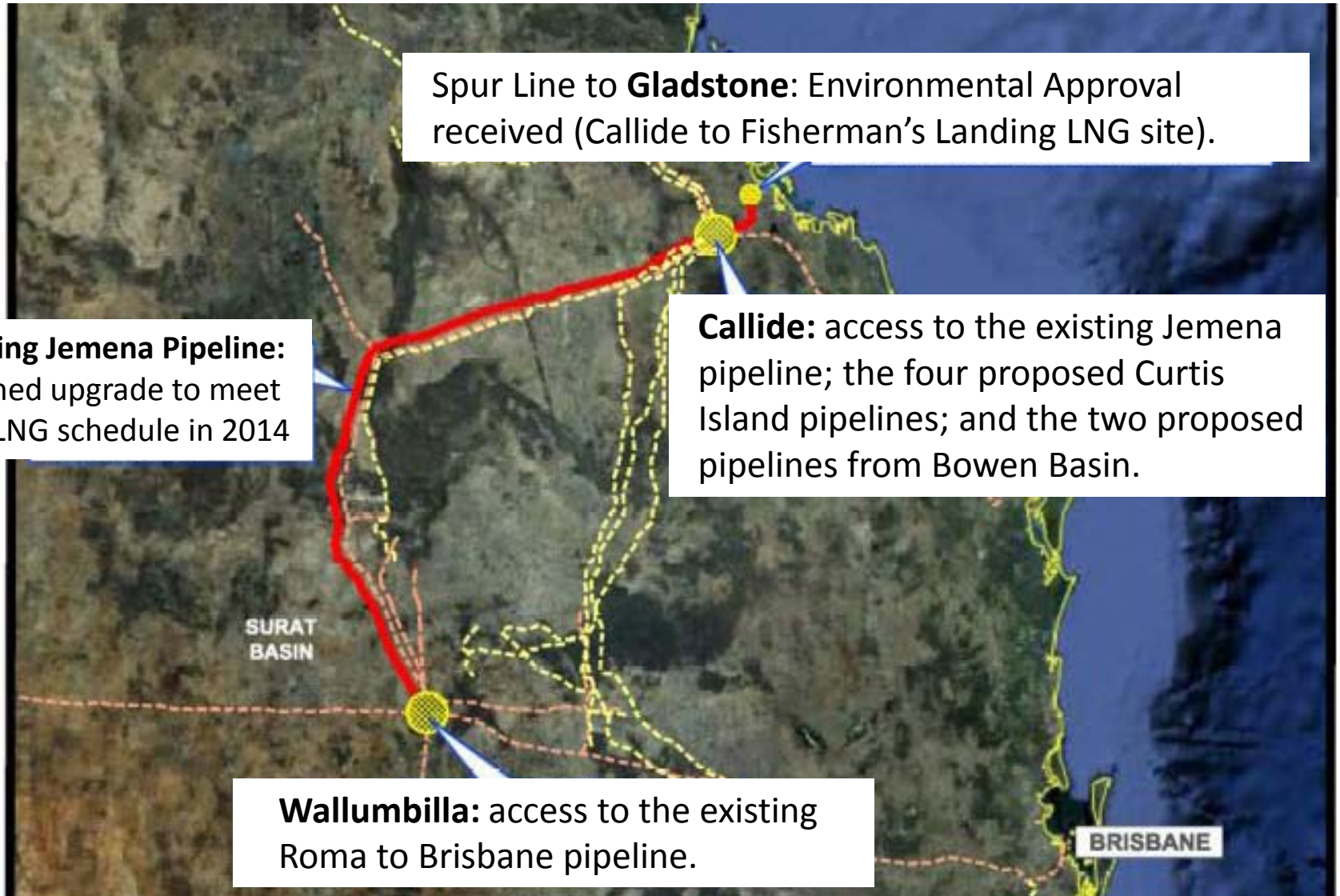
CSG Exploration Companies

- ▶ Long term supply, through gas supply agreements and/or farm-in arrangements to compliment any short term supply arrangements

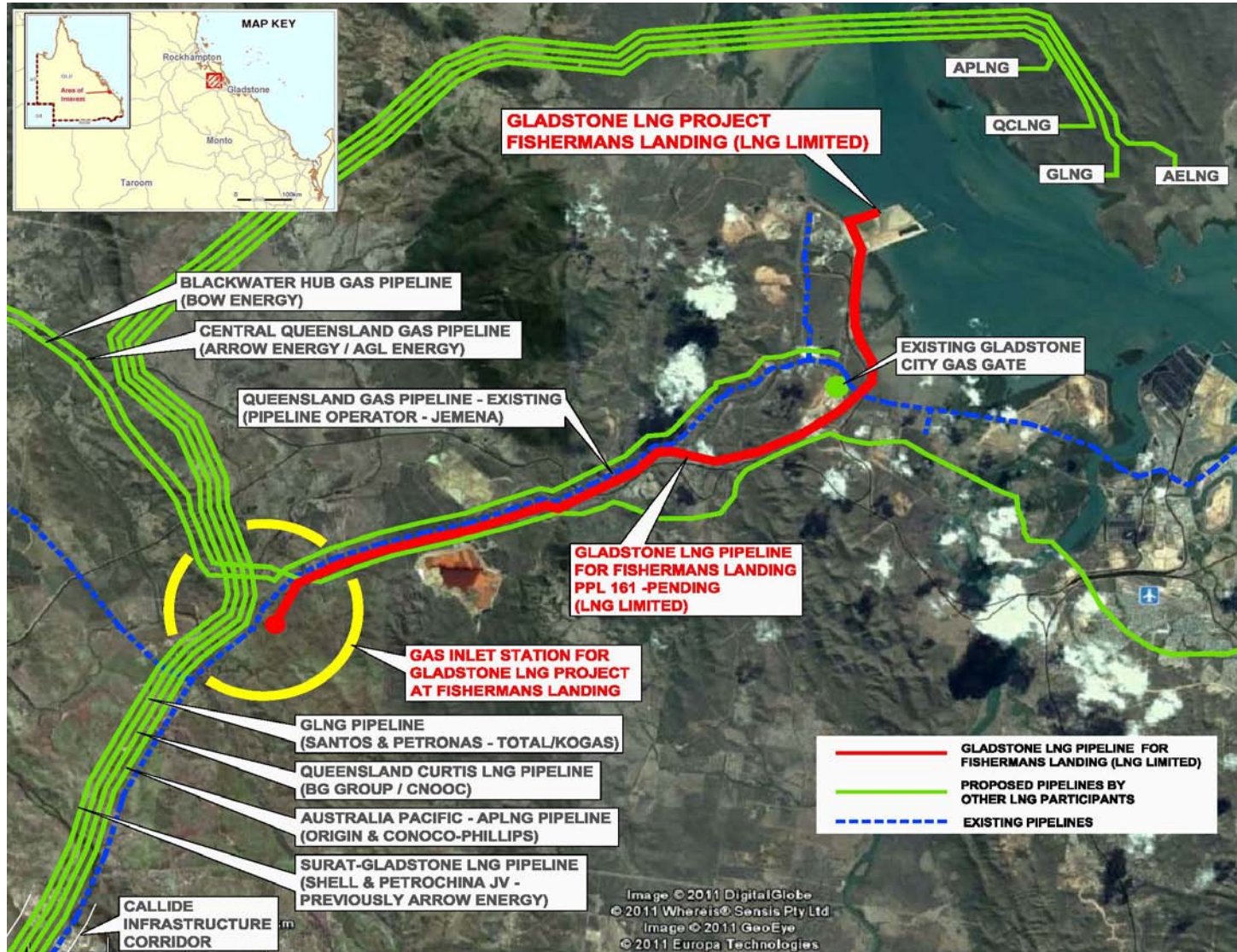
▶ HQCEC Agreements

- ▶ EPC Contract proposal from HQCEC. Cost estimate in June, proposal by Sep 2011
- ▶ Arrange LNG off-take and funding arrangements

Gas Delivery Plan



Gladstone LNG "Spur" Pipeline



QUEENSLAND / NSW CSG COMPANIES

- ▶ **Curtis Island LNG Projects**
 - ▶ QCLNG (BG/CNOOC/Tokyo Gas)
 - ▶ GLNG (Santos / Petronas / Total / KOGAS)
 - ▶ APLNG (Origin / ConocoPhillips / Sinopec)
 - ▶ AELNG (Shell / PetroChina)
- ▶ **Established Gas Producers (outside the Curtis LNG Projects)**
 - ▶ AGL
 - ▶ Origin
 - ▶ Santos
- ▶ **Other CSG Companies such as:**
 - ▶ Bow Energy
 - ▶ Mitsui
 - ▶ Westside
 - ▶ Molopo
 - ▶ Senex Energy
 - ▶ Blue Energy
 - ▶ Metgasco
 - ▶ Eastern Star Gas

HQCEC TRANSACTION

Major shareholding in LNG Ltd by HQCEC demonstrates

- ▶ HQCEC's confidence in LNG Ltd's OSMR® LNG process technology
- ▶ HQCEC's confidence in securing gas for the Gladstone LNG Project "Fisherman's Landing"
- ▶ HQCEC's confidence in reaching FID for the Gladstone LNG Project "Fisherman's Landing"

Shared Vision

- ▶ Gladstone LNG Project "Fisherman's Landing" to showcase the capabilities of HQCEC and LNG Ltd:
 - ▶ HQCEC to become the global LNG EPC contractor of first choice
 - ▶ LNG Ltd's OSMR® technology to become the global LNG process technology of first choice
 - ▶ CNPC potentially securing additional LNG supply for the Chinese market

HQCEC – ALWAYS BUILDS SUCCESS

Disclaimer

The information in this presentation is not an offer or recommendation to purchase or subscribe for securities in Liquefied Natural Gas Limited (ASX:LNG) or to retain any securities currently being held. This presentation does not take into account the potential and current individual investment objectives or the financial situation of investors.

This presentation was prepared with due care and attention and the information contained herein is current at the date of the presentation.

This presentation contains forward looking statements that are subject to risk factors associated with the gas and energy industry. The expectations reflected in these statements are reasonable, but they may be affected by a range of variables that could cause actual results or trends to differ materially, including but not limited to: price and currency fluctuations, geotechnical factors, drilling and production results, development progress, operating results, reserve estimates, legislative, fiscal and regulatory developments, economic and financial markets conditions in various countries, approvals and cost estimates.

All references to dollars, cents or \$ in this document is a reference to Australian Dollars, unless otherwise stated.



Our Logo:

We chose the red ant as our logo because it is distinctive and bold and represents strength, energy, hard work and perseverance – characteristics we aim to make trademarks of our corporate culture.